

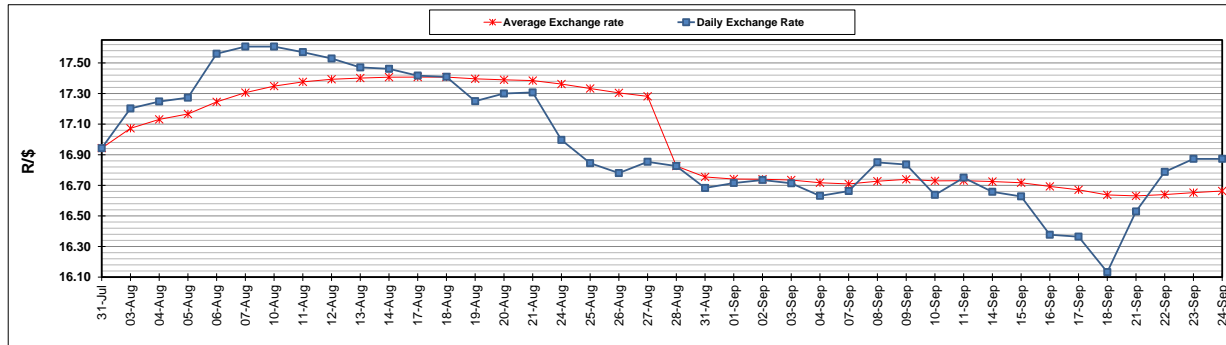
	PETROL 95 ULP	PETROL 93 ULP & LRP	DIESEL 0.05%	DIESEL 0.005%	ILL. PAR.
GAUTENG PUMP PRICE (SA c/l) AS FROM 02/09/2020	1,518.000	1,489.000	-	-	-
WHOLESALE PRICE (SA c/l) AS FROM 02/09/2020	-	-	1,327.560	1,331.960	716.828
SINGLE NATIONAL MAXIMUM RETAIL PRICE	-	-	-	-	899.000
BASIC FUEL PRICE - 24/09/2020 (SA c/l)	535.308	523.947	477.996	480.139	442.893
PRESS RELEASE CONTRIBUTION TO BFP 02/09/2020 - 24/09/2020 (SA c/l)	565.470	546.470	576.630	581.030	512.128
UNIT OVER/(UNDER) RECOVERY - 24/09/2020 (SA c/l)	30.162	22.523	98.634	100.891	69.235
AVERAGE BASIC FUEL PRICE 28/08/2020 - 24/09/2020	531.119	520.752	488.728	490.776	435.426
AVERAGE UNIT OVER/(UNDER) RECOVERY 28/08/2020 - 24/09/2020	34.996	26.363	91.052	93.404	80.602

ANALYSIS MOVEMENT OF AVERAGE OVER/(UNDER) RECOVERY

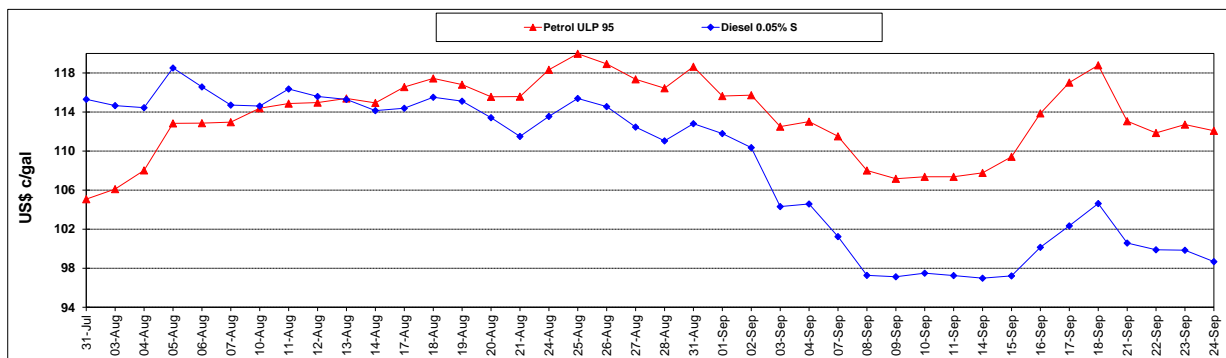
	PETROL 95	PETROL 93	DIESEL 0.05%	DIESEL 0.005%	ILL. PAR.
- MOVEMENT IN INTERNATIONAL PRODUCT PRICES	15.285	7.037	72.914	75.190	64.442
- MOVEMENT IN EXCHANGE RATE	19.711	19.326	18.138	18.214	16.160
AVERAGE UNIT OVER/(UNDER) RECOVERY 28/08/2020 - 24/09/2020	34.996	26.363	91.052	93.404	80.602

R/\$ EXCHANGE RATE - (R/\$16.8728 - 24/09/2020)

EXCHANGE RATE USED IN BASIC FUEL PRICE



INTERNATIONAL PRODUCT PRICES OF BASKET USED IN BASIC FUEL PRICE



BASIC FUEL PRICE IN SA CENTS PER LITRE

